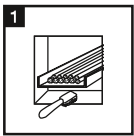
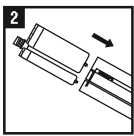


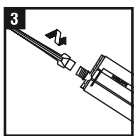
Installation instructions



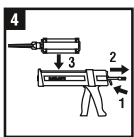
1 Clean the opening to be sealed. The material around the opening must be dry, in sound condition and free from dust or grease.



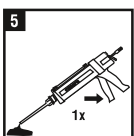
Check the foil pack holder for damage and ensure that it functions correctly. **Slide the foil pack into the holder.** **Caution:** Never use damaged foil packs and/or damaged or badly soiled foil pack holders.



Remove the cap. **Screw the mixing nozzle all the way onto the foil pack and tighten it securely.** Check that the black mixing element is in place inside the nozzle! Do not use damaged mixing nozzles. Do not, under any circumstances, modify or tamper with the mixing nozzle. The foil pack should only be used together with the mixing nozzle supplied. A new mixing nozzle must be used with each new foil pack.

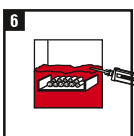


Insert the holder containing the foil pack into the dispenser: Press the release button on the dispenser, pull the piston rod back as far as it will go and then insert the holder containing the foil pack into the dispenser.



The foil pack opens automatically when dispensing begins. Never pierce a hole in the foil pack! This will cause the system to malfunction.

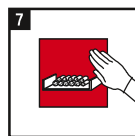
Discard the unevenly mixed initial quantity: The foam dispensed by the first stroke of the dispenser must be discarded, e.g. in the empty outer packaging material.



Apply the firestop foam in the opening to be sealed. The mixed components of the foam react and begin to expand approx. 30 seconds after application (at 23°C). Fill the opening completely with firestop foam, including gaps between individual cables, etc.

NOTE:

It is generally best to begin in the middle of the opening, building up the foam by working from bottom to top. In openings with access from only one side, begin at the rear and work toward the front.



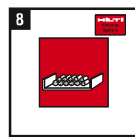
The foam will harden in the mixing nozzle during pauses (i.e. > 1 minute at 23°C; > 20 seconds at 35°C). **The mixing nozzle must then be changed.** Release the pressure from the piston rod before changing the mixing nozzle.

Use formwork made from an air-permeable material (e.g. perforated cardboard) when filling openings in ceilings.

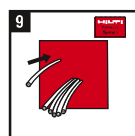
The foam can be shaped or smoothed by hand (if necessary) after approx. 5 minutes (at 23°C). **Wear protective gloves!** After approx. 10 minutes (at 23°C) the foam becomes hard and it can then be cut.

NOTE:

After hardening, any projecting foam can be trimmed off to the specified minimum depth. Trimmed-off scraps of hardened foam can be placed in the next opening and fresh foam applied around these.



Mount the installation identification plate beside the correctly sealed opening, if required.



Subsequent installation of cables or pipes Additional cables or pipes can be installed in the opening without difficulty. Do not exceed the approved maximum number and size of cables or pipes.

1. The cable or pipe may be pushed directly through the foam. Where necessary, use a suitable tool (screwdriver or drill bit, etc.) to make a hole in the foam before pushing the cable or pipe through. Do not damage existing cables.
2. Seal any remaining gaps carefully with CFS-F FX