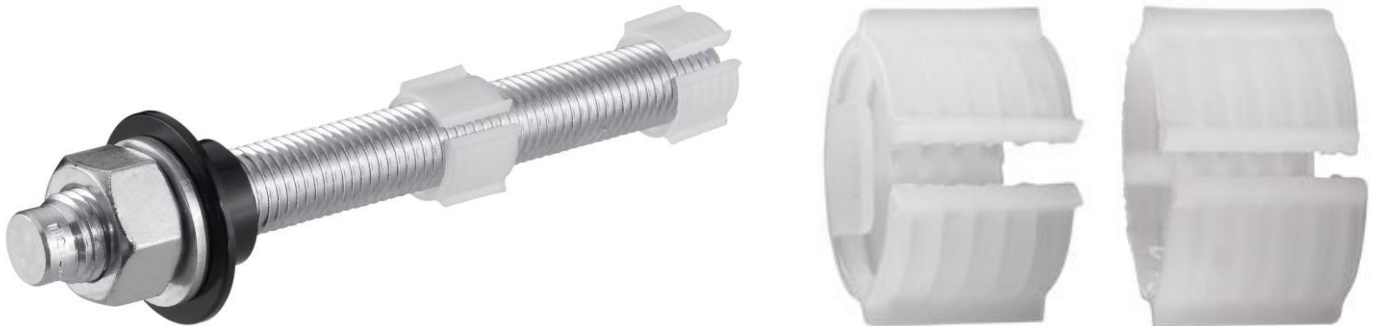


Centreing rings

HIT-CR

For centreing anchors in the borehole and holding overhead



Applications

- Fastenings in railway tunnels where current causes high safety risks
- Machine fastenings
- Wide range of fastenings where the current puts the fastening application at risk
- Overhead applications where the centering of the rod is difficult or where the rod does not stick into the borehole

Advantages

- Guaranteed centreing of the anchoring element in the borehole
- Physical separation of the anchor rod from the concrete and potential rebar
- Holds the rod in place in overhead applications
- Technical data available for load values with RE-500 and extensive data on electrical insulation

Ordering

Product description	additional description	Rod diameter	Drill bit diameter	Minimum order quantity	Item Number
HIT-CR M8-E (not existing)					
HIT-CR M10-E (not existing)					
HIT-CR M12-E ▲	End piece	M12	18 mm	100 pc	00382252
HIT-CR M16-E ▲	End piece	M16	22 mm	100 pc	00382253
HIT-CR M20-E ▲	End piece	M20	25 mm	100 pc	00382254
HIT-CR M24-E ▲	End piece	M24	30 mm	100 pc	00382255
HIT-CR M27-E ▲	End piece	M27	32 mm	100 pc	00382256
HIT-CR M30-E ▲	End piece	M30	37 mm	100 pc	00382257
HIT-CR M33-E ▲	End piece	M33	40 mm	100 pc	00382258
HIT-CR M8-M ▲	Middle piece	M8	14 mm	100 pc	00383472
HIT-CR M10-M ▲	Middle piece	M10	16 mm	100 pc	00383473
HIT-CR M12-M ▲	Middle piece	M12	18 mm	100 pc	00383474
HIT-CR M16-M ▲	Middle piece	M16	22 mm	100 pc	00383475
HIT-CR M20-M ▲	Middle piece	M20	25 mm	100 pc	00383476
HIT-CR M24-M ▲	Middle piece	M24	30 mm	100 pc	00383477
HIT-CR M27-M ▲	Middle piece	M27	32 mm	100 pc	00383478
HIT-CR M30-M ▲	Middle piece	M30	37 mm	100 pc	00383479
HIT-CR M33-M ▲	Middle piece	M33	40 mm	100 pc	00383480

▲ Subject to lead time. Contact Hilti prior ordering.