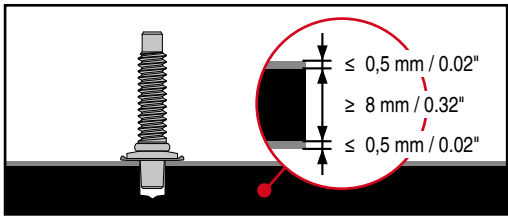
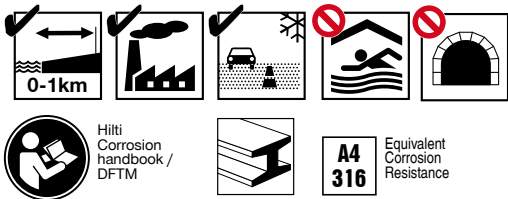


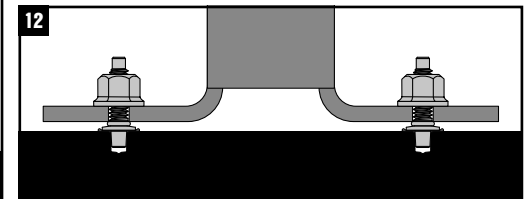
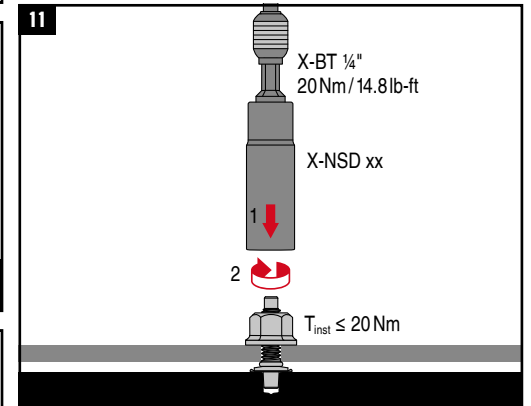
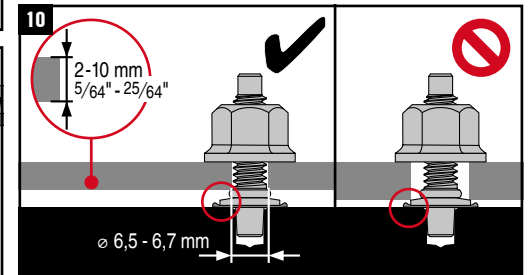
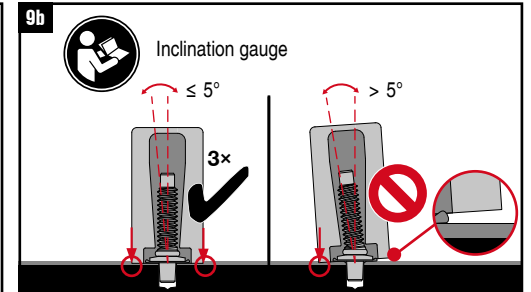
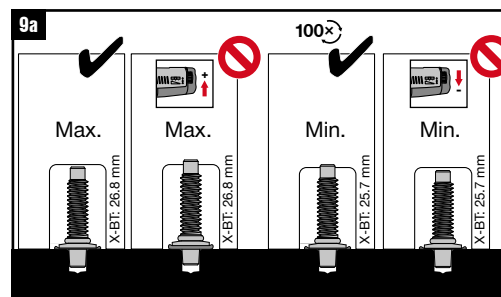
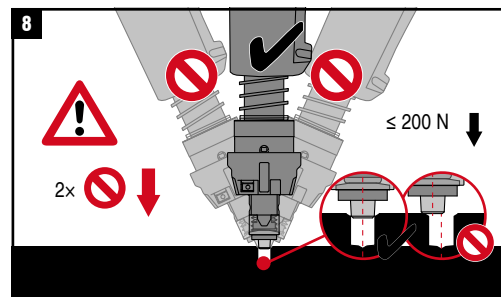
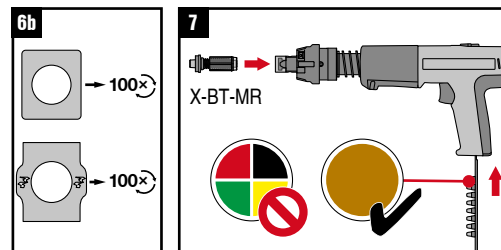
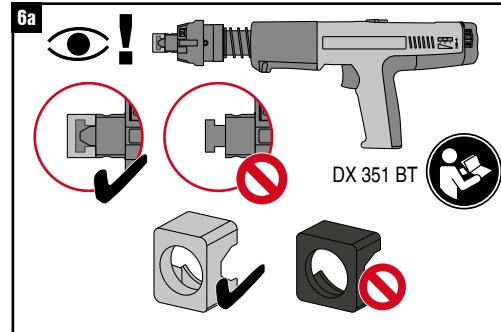
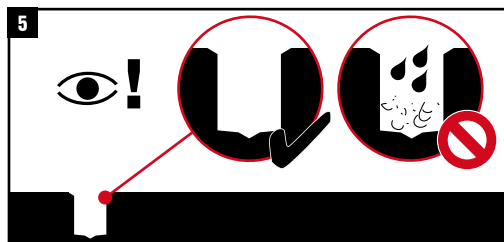
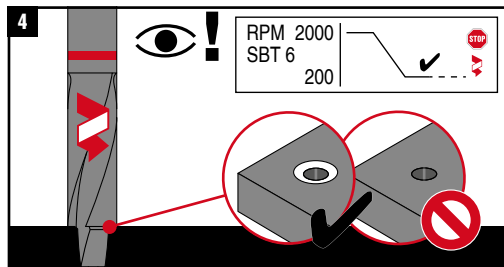
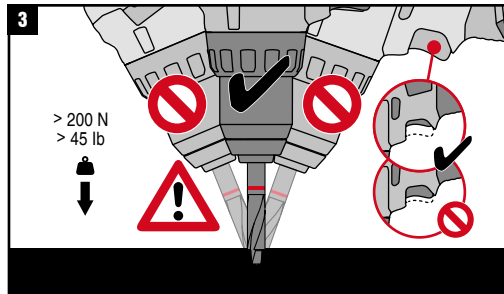
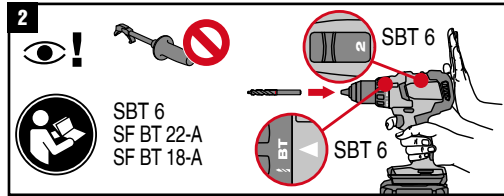
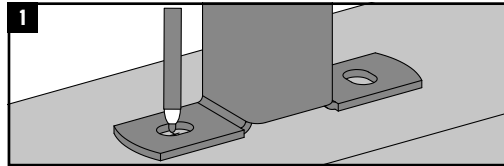
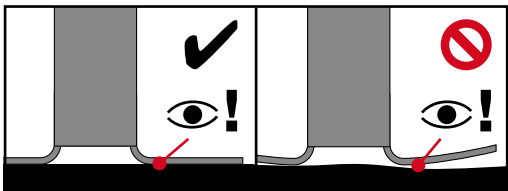


2259050-01.2025

CE
21
Hilti AG LI-9494 Schaan
Hilti-DX-DoP-008
ETA-20/1042
EAD 333037-00-0602
0672
0672-CPR-0934
Threaded studs for connection of materials to structural steel



		Use with					
X-BT-MR M6/10 SN 8	✓	SBT 6	DX 351-BT	X-BT 1/4" - 20Nm/14,8 ft lb	X-NSD 1/4" - 10 mm	X-IG BT M6	
X-BT-MR W6/10 SN 8		SF BT 22-A			X-NSD 1/4" - 7/16"	X-IG BT W6	



CE
21
Hilti AG LI-9494 Schaan
Hilti-DX-DoP-008
ETA-20/1042
EAD 333037-00-0602
0672
0672-CPR-0934
Threaded studs for connection
of materials to structural steel



BUREAU
VERITAS



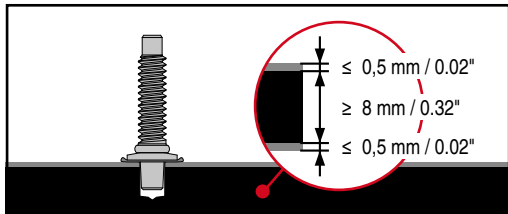
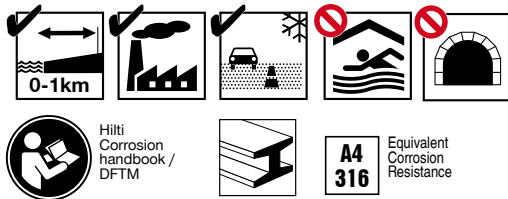
APPROVED
TYPE APPROVAL
SCHEME



TYPE APPROVED PRODUCT
DNV.COM/AF



TYPE APPROVED PRODUCT



		Use with						
X-BT-MR M6/10 SN 8	✓	SBT 6	SF BT 22-A	SF BT 18-A	BX 3-BT	X-BT 1/4" 20Nm/	X-NSD 1/4" 14,8 ft lb	X-IG BT M6
X-BT-MR W6/10 SN 8							X-NSD 1/4" 7/16"	X-IG BT W6

